

DISCOVER THE POSSIBILITIES

Diagnostic Medical Sonography • Emergency Medical Services
Medical Imaging • Medical Laboratory Science • Nursing
Phlebotomy • Surgical Technology



Reading Hospital
School of Health Sciences

READING HOSPITAL

Advancing Health. Transforming Lives.

DISCOVER THE

POSSIBILITIES

SCHOOL OF HEALTH SCIENCES

The image shows the exterior of a modern building, identified as the School of Health Sciences. The building features a curved facade made of textured brick. A prominent cylindrical tower with a dark, domed top is visible on the left side. Large, dark-framed windows are set into the brickwork. The text "SCHOOL OF HEALTH SCIENCES" is mounted on the brick above one of the windows. The foreground includes a paved walkway, a low brick wall, and some greenery. The sky is blue with scattered white clouds.

GREETINGS FROM THE SCHOOL DIRECTOR



Welcome to Reading Hospital School of Health Sciences, home to excellent educational programs designed to develop competent and compassionate healthcare professionals.

On behalf of the faculty, staff, and students in the school, I would like to thank you for your interest in our educational programs.

As hospital-based programs, we are committed to preparing individuals like you to become skilled professionals in a career such as Diagnostic Medical Sonography, Emergency Medical Services (EMT through Paramedic), Medical Laboratory Science, Medical Imaging, Nursing, Phlebotomy, or Surgical Technology. Our experienced classroom and clinical faculty is known for their dedication to helping individuals achieve success, and are committed to providing classroom, laboratory, simulation, and clinical experiences that support excellence in teaching and learning.

RSHS provides:

high quality, affordable education,
a starting path to a bachelor's degree, and
your pathway to an exciting career in healthcare.

This is your chance to make a difference and become a respected member of a healthcare profession. Our faculty, staff, and administrators are happy to meet students, families, alumni, and other visitors, and I hope to see you on campus soon.

Sincerely,

A handwritten signature in blue ink that reads "Debbie J. Rahn". The signature is written in a cursive, flowing style.

Dr. Debbie J. Rahn

DISCOVER THE POSSIBILITIES

Your future begins here. Your future begins now.

There has never been a better time to prepare for a future as a healthcare professional. Reading Hospital School of Health Sciences (RHSHS) is a state-of-the-art facility designed to prepare qualified students for exciting careers through these highly-regarded diploma and certificate programs:

- Diagnostic Medical Sonography
- Emergency Medical Services
- Medical Imaging
- Medical Laboratory Science
- Nursing
- Phlebotomy
- Surgical Technology

Our campus is more than an investment in our students. It represents a commitment to our community as we provide a cohesive and comprehensive education for the women and men who will become the future providers of healthcare in our community.

Located at the southeast end of Reading Hospital's main West Reading, Pennsylvania campus, RHSHS is the perfect place for emerging healthcare professionals like you. Your fellow students come from different backgrounds and different communities, but share your passion for healthcare.

Our programs match your interest and talents – whether at bedside or accident scene, whether working with high tech equipment or focusing on one-to-one relationships.

When you graduate, you may have the opportunity to begin your new career with us, supported by the same healthcare professionals you encountered during your school days. Or, you can leverage your educational experience for healthcare opportunities just about anywhere in the country.

This is your chance to make a difference... your opportunity to master technology, expand your horizons, and become a respected member of the healthcare team.

Information regarding our school, academic programs, support services, and program-specific admission requirements, along with current tuition and housing costs, may be found at rhschoolofhealthsciences.org or by calling 484-628-0100.

Experience

Reading Hospital School of Health Sciences has been educating healthcare professionals for the future since 1889. Today, our School of Health Sciences continues this proud tradition of providing educational programs that develop competent and compassionate professionals capable of providing high-quality healthcare services to individuals, families, and communities.

RHSHS is recognized for outstanding academics and clinical experiences. Our programs equip graduates with valuable practice experience through on-site and community-based clinical opportunities. Learning is promoted by innovative teaching methods in an open, positive, and supportive environment.

Our 60,000-square-foot facility, dedicated entirely to educating emerging healthcare professionals, features state-of-the-art technology and resources to enrich the student experience.

Affiliations

Reading Hospital School of Health Sciences reflects Tower Health's mission to educate healthcare professionals for the future. In addition to the programs housed within the school, Reading Hospital also offers physician residency programs, clinical experiences for medical students, and internships and clinical rotations for students and graduates in other professional fields.

The School of Health Sciences is affiliated with Alvernia University which provides students with the curriculum's general education courses. This relationship provides students enrolled in the Diagnostic Medical Sonography, Medical Imaging, Nursing, and Surgical Technology programs with a challenging academic curriculum complemented by the clinical focus and hands-on experience at Reading Hospital. Students in these programs earn a diploma or certificate from Reading Hospital School of Health Sciences and an associate degree from Alvernia University. Upon graduation, students have the opportunity to advance their career by pursuing a bachelor's degree at Alvernia University. Numerous healthcare-related degree programs are available at Alvernia, including a bachelor's in Nursing, Healthcare Science, and Healthcare Administration. For more information, visit Alvernia's website at www.alvernia.edu/RHSHS.

Commitment

The school's faculty members, all experienced practitioners, are committed to helping students assess their abilities, meet their educational goals, and plan their professional futures. This supportive relationship encourages students to grow both professionally and personally.



THE PROGRAMS WE OFFER

Diagnostic Medical Sonography

The Diagnostic Medical Sonography program offers students exceptional classroom and clinical experiences in preparation to provide compassionate, ethical, and evidence-based patient care when delivering Diagnostic Medical Sonography imaging services and student learning outcomes.

Emergency Medical Services

Emergency Medical Services (EMS) providers perform basic to advanced skills on patients with life-threatening illnesses and injuries in highly stressful situations. An EMS provider works as part of a team in providing first-responder services in the community.

Our EMS programs prepare you for certification as an Emergency Medical Technician (EMT) and a Paramedic. Your duties and skills as an EMS provider depend on your level of education.

Medical Imaging

We offer students exceptional classroom and clinical experiences in preparation for an exciting career in medical imaging. Since 1946, our program has educated students who have advanced their careers in a wide variety of radiologic imaging settings, both here at Reading Hospital and in locations across the nation.

Medical Laboratory Science

The Medical Laboratory Science program at offers students with a professional attitude a solid foundation in scientific principles and proficiency in the performance of laboratory procedures vital to becoming a professional healthcare provider committed to lifelong learning.

Nursing

If you're looking for an exceptional educational program to prepare you for a career as a Registered Nurse, our Nursing program is for you. Widely recognized for excellence in both the classroom and clinical settings, our program has been preparing women and men since 1889 to serve in a variety of nursing fields both here and around the world.

Phlebotomy

The Phlebotomy Technician program is a formal two-part program that combines didactic instruction with clinical training to teach the successful graduate how to safely collect venous and capillary blood specimens for laboratory analysis.

Surgical Technology

The Surgical Technology program offers students exceptional classroom, laboratory simulation, and clinical experiences in preparation for an exciting career in a surgical setting. Students also earn a certificate in robotic surgery and experience hands-on practice with the da Vinci Surgical Robot during clinical practice.



Admission Application and Program Information

Each program has specific application deadlines and requirements by which students must follow. Information about the Selective Admission Policy can be viewed at reading.towerhealth.org/sohs/policies. Applicants selected for admission must complete all post acceptance requirements, including all background checks, health screenings, tests, and immunizations according to the established deadlines.

Reading Hospital School of Health Sciences complies with applicable Federal civil rights laws and does not discriminate on the basis of race, color, national origin, age, disability, or sex. Reading Hospital School of Health Sciences does not exclude people or treat them differently because of race, color, national origin, age, disability, or sex.

Transferring of Credit

Credit may be transferred from accredited post-secondary institutions to the following curricula: Diagnostic Medical Sonography, Medical Imaging, Nursing, and Surgical Technology. Please know that transferring in credit may impact financial aid eligibility. Our Emergency Medical Services, Medical Laboratory Services, and Phlebotomy programs do not allow for transferring of credit or advanced placement.

In alignment with our collegiate vendor, Alvernia University, Reading Hospital School of Health Sciences does not grant credit for online courses in laboratory science for major science courses, including Anatomy and Physiology I, Anatomy and Physiology II, Microbiology, and Physics. This policy prohibits transfer of biology/science credits for all courses (didactic and laboratory) that are not delivered face to face in a classroom with a teaching professor present. Online courses may be labeled by a college in a variety of terms including, but not limited to, "online", "distance education", "asynchronous", "synchronous", or "hybrid" formats, all of which are nontransferable.

Financial Aid and Tuition/Fees

Financial aid is available for students enrolling in the Nursing program or Medical Imaging program. Contact the Financial Aid Office at 484-628-0105 or 484-628-0106 for details concerning scholarships and financial aid opportunities. Information regarding current tuition and housing costs may be found at reading.towerhealth.org/academics/health-sciences/financial-information/tuition-and-fees.

Student Services

Your schooling can be productive and fun. To help navigate through the educational experience, we offer academic advising, peer tutoring, housing, library services, career development, and job placement services from pre-enrollment to post-graduation. Our student development program is designed around your academic needs, social interests, extracurricular activities, and leadership opportunities. Students can participate in student government and other student organizations.

Policies

Information pertaining to the student handbook, academic calendar, progression and graduation, transfer credit practice, payment plan and refunds, and program policies and processes by which students must follow, can be found at: <https://reading.towerhealth.org/academics/health-sciences/school-policies>.

Visit Us

We welcome visits through formal events and personal appointments. Go to reading.towerhealth.org/discover to view our upcoming open house events. To schedule an appointment with an admissions representative, please call 484-628-0100 or email: rhshs@towerhealth.org. Directions to our school are located at www.rhschoolofhealthsciences.org.

DIAGNOSTIC MEDICAL SONOGRAPHY



The Diagnostic Medical Sonography program offers students exceptional classroom and clinical experiences in preparation to provide compassionate, ethical, and evidence-based patient care when delivering Diagnostic Medical Sonography imaging services and student learning outcomes.

Program Overview

The 27-month Diagnostic Medical Sonography program, which begins each January, leads to an Associate in Science degree. This is a cooperative degree program between Reading Hospital School of Health Sciences (RHSHS) and Alvernia University. Graduates of the Diagnostic Medical Sonography program are eligible to take the national credentialing exams through the American Registry for Diagnostic Medical Sonography (ARDMS) upon meeting specific requirements.

This program is designed to provide theoretical knowledge and hands-on application through rigorous clinical experiences. Classes and clinical experiences are held Monday through Friday between 7 a.m. and 5 p.m. The liberal arts courses are taught by Alvernia University faculty. These courses provide students with a well-rounded background as well as meet the requirements for the Associate of Science degree from Alvernia University.



Dual Enrollment with Alvernia University

Students who enroll in the hospital-based Diagnostic Medical Sonography program offered at Reading Hospital School of Health Sciences are simultaneously enrolled in Alvernia University's Associate of Science in Diagnostic Medical Sonography program. Dually enrolled students who successfully complete all aspects of Reading Hospital School of Health Sciences Diagnostic Medical Sonography curriculum are eligible to graduate with two awards, each conferred by their respective institution:

- a Certificate in Diagnostic Medical Sonography from Reading Hospital School of Health Sciences, and
- an Associate of Science in Diagnostic Medical Sonography from Alvernia University.

Credit Breakdown

- 47 diagnostic medical sonography credits
- 33 general education credits
- 80 credits total

Lambda Nu National Honor Society

The Medical Imaging program at Reading Hospital School of Health Sciences established the Pennsylvania Sigma Chapter of the Lambda Nu National Honor Society for Radiologic and Imaging Sciences. Exceptional students, faculty, and alumni are recognized for their honor, integrity, and academic achievement when they qualify to Lambda Nu.

Career Mobility

Graduates looking to advance their professional skills can pursue Alvernia University's Bachelor of Science in Healthcare Science or Healthcare Administration. Courses are offered in blended and online formats to allow our graduates to maintain employment while earning their advanced degree.

Accreditation

The Reading Hospital School of Health Sciences Diagnostic Medical Sonography program is accredited by the Commission on Accreditation of Allied Health Education Programs (www.caahep.org) upon the recommendation of the Joint Review Committee on Education in Diagnostic Medical Sonography (www.jrcdms.org).

CAAHEP is located at: 9355 113th St. N #7709, Seminole, FL 33775, Phone: 727-210-2350, Fax: 727-210-2354

Application and Admission

Successful applicants have above average grades in all required high school and/or college coursework, two favorable references, satisfactory knowledge and technical skills, and demonstrate successful performance during the interview process. Applicants must have a minimum GPA of 2.5. The most recent college or high school GPA is used in the decision process. The application and materials deadline is June 1.

EMERGENCY MEDICAL SERVICES



The Emergency Medical Services program offers the following three levels of educational certifications: Emergency Medical Technician (EMT) and Paramedic Education.

EMT Program Overview

All EMS programs are approved by the Pennsylvania Department of Health. The EMT program prepares students to become first responders in emergency situations. Coursework covers topics such as assessment, treatment of injuries, and proper use of equipment. EMT certification classes run every fall, spring, and summer. Applicants must be 16 years of age to sit for the certification exam. Upon completion of the program, students will be required to take the National Registry EMT Exam.

EMT Application and Admission

You can register for the program by completing the online application form located at <https://reading.towerhealth.org/admissions/application-process/online/>. All supporting documentation, satisfactory background checks, a copy of your health insurance card, and full tuition payment must be received by the deadlines. Admission to the program is on a first-come first-serve basis which means the first 24 applicants will be offered a seat in the admission class.

Paramedic Education Program Overview

The Paramedic Education program gives students the opportunity to combine their educational and work experience in both the community and the hospital. This combination provides an understanding of continuity of care—from first contact with the patient in the field until discharge from the hospital. The program includes didactic, clinical, and field experience provided by Reading Hospital in cooperation with more than 29 basic and advanced life support services in Berks County and beyond. Upon graduation, students are qualified to take the National Registry Exam for paramedics. The program runs for approximately eleven months with classes beginning every August at Reading Hospital School of Health Sciences and at Phoenixville Hospital every January.

Paramedic Application and Admission

Qualified applicants are admitted to the program on a rolling basis based on the following:

- Current EMT certification in the Commonwealth of Pennsylvania.
- “Recommend with confidence” rating.
- All required transcripts.
- Completion of the most recent version of the Test of Essential Academic Skills (ATI TEAS).

Approval and Accreditation

All EMS programs are approved by the Pennsylvania Department of Health. The Paramedic Program is accredited by the Commission on Accreditation of Allied Health Education Programs (www.caahep.org) upon the recommendation of the Committee on Accreditation of Educational Programs for the Emergency Medical Services Professions (CoAEMSP).

Commission on Accreditation of Allied Health Education Programs

727-210-2350
www.caahep.org

To contact CoAEMSP:
214-703-8445

www.coaemsp.org

MEDICAL IMAGING



The Medical Imaging program offers students exceptional classroom and clinical experiences in preparation for an exciting career in Medical Imaging. Established in 1946, the program has educated students who have advanced their careers, both here at Reading Hospital and across the nation.

Program Overview

Graduates of the 27-month program, which begins each January, are well prepared for entry level employment as diagnostic radiographers and have consistently transitioned into a variety of healthcare settings with ease as a result of their well-structured education and clinical experiences. The dual enrollment component of the program allows students to simultaneously earn a certificate of completion from RHSHS and an Associate of Science in Medical Imaging degree from Alvernia University. As such, graduates are eligible to make application to the American Registry of Radiologic Technologists (ARRT) to sit for the national credentialing exam.



Dual Enrollment with Alvernia University

Students who enroll in the hospital-based Medical Imaging program offered at Reading Hospital School of Health Sciences are simultaneously enrolled in Alvernia University's Associate of Science in Medical Imaging degree program. Dually enrolled students who successfully complete all aspects of Reading Hospital School of Health Sciences Medical Imaging curriculum are eligible to graduate with two awards, each conferred by their respective institution:

- a Certificate in Medical Imaging from Reading Hospital School of Health Sciences, and
- an Associate of Science in Medical Imaging from Alvernia University.

Credit Breakdown

- 49 medical imaging credits
- 29 general education credits
- 78 credits total

Lambda Nu National Honor Society

The Medical Imaging program established the Pennsylvania Sigma Chapter of the Lambda Nu

National Honor Society for Radiologic and Imaging Sciences. Exceptional students, faculty, and alumni are recognized for their honor, integrity, and academic achievement when they qualify for induction into Lambda Nu.

Career Mobility

Once credentialed by the American Registry of Radiologic Technologists, graduates are eligible for employment throughout the US. Many radiographers thrive on the variety offered in a radiology department, while others elect to specialize in areas such as fluoroscopy, trauma, mobile/surgical or pediatric/geriatric radiography. Still others choose to continue their education to work in areas such as cardiovascular imaging, CT, interventional radiology, MRI, nuclear medicine, sonography, or radiation oncology.

Additionally, graduates interested in continuing their collegiate education may proceed seamlessly into Alvernia University's Bachelor of Science in Healthcare Science or Healthcare Administration. Courses are offered in blended and online formats, allowing our graduates to maintain employment while earning their advanced degree.

Accreditation

Reading Hospital School of Health Sciences Medical Imaging Program is accredited by The Joint Review Committee on Education in Radiologic Technology (JRCERT). The programs' current standing with JRCERT is **ACCREDITED; 8-year accreditation award** (maximum award achievable) (JRCERT: 312-704-5300; www.jrcert.org).

Application and Admission

Successful applicants have above average grades in all required high school and/or college coursework, favorable references, exemplary knowledge and technical skills, and demonstrate successful performance during the interview process. Applicants must document a minimum GPA of 2.8. The most recent college or high school GPA is used in the decision process. The application and materials deadline is April 15.

MEDICAL LABORATORY SCIENCE



The Medical Laboratory Science program offers students with a professional attitude a solid foundation in scientific principles and proficiency in the performance of laboratory procedures vital to becoming a professional healthcare provider committed to lifelong learning.

Program Overview

The Medical Laboratory Science (MLS) program is an 11-month program, often completed during the senior year of college for 3+1 students that are undergraduate majors in Medical Technology. Applicants with a baccalaureate degree who meet entrance requirements may also be considered as a 4+1 option, and are encouraged to apply. The MLS program begins each July and ends each June. The curriculum is designed to provide the necessary entry level experiences for MLS graduates to work in all areas of the clinical laboratory including Chemistry, Coagulation, Hematology, Blood Bank, Microbiology, and Urinalysis through a combination of clinical rotations and didactic instruction over approximately 48 weeks.

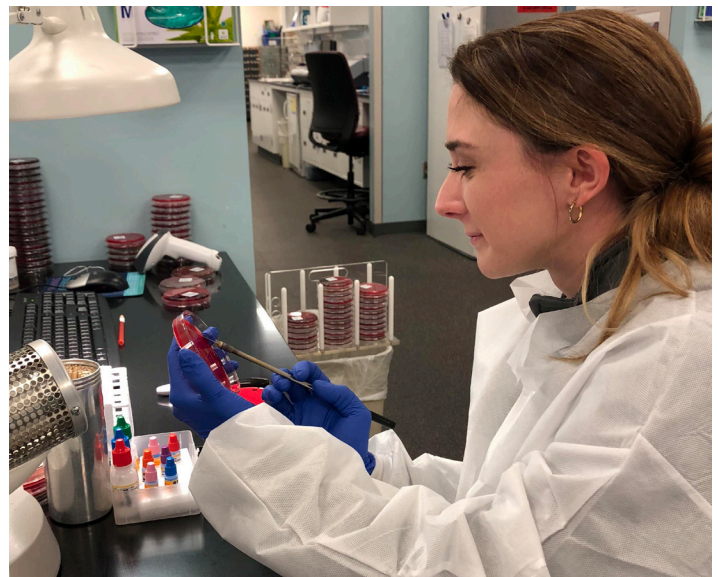
After completion of the MLS program, students will receive a certificate of completion from Reading Hospital and will be eligible to sit for the national board of certification exam (BOC) given by the American Society for Clinical Pathology (ASCP).

Outcome Measures

Graduates of the program are highly marketable, as evident by 100% relevant job placement within six months of graduation and above national average ASCP BOC exam first time pass rates. Most graduates have gained employment in hospital laboratories and private pharmaceutical and reference laboratories

Location

Medical Laboratory Science involves moderate and high complexity testing using state-of-the-art instrumentation and technology to perform patient testing for diagnosis and treatment of disease. MLS students have their clinical rotations and lectures at the Reading Hospital main campus. There are no extra, or unexpected, traveling between various hospitals for clinical rotation sites while in the program.



Accreditation

The program is accredited by the National Accrediting Agency for Clinical Laboratory Sciences (NAACLS), 5600 North River Road, Suite 720, Rosemont, Illinois 60018; 773-714-8880.

Application and Admission

The application deadline is October 20. Applicants must submit two references, a career statement and transcripts demonstrating a 2.5 GPA. The career statement is a one page essay on why the candidate wants to become a medical laboratory scientist.

NURSING



The Nursing program offers a Registered Nurse diploma program that builds on 133 years of experience in educating women and men for an exciting career in the nursing profession. Our graduates have secured positions at Reading Hospital and elsewhere in our community, as well as around the world.

Program Overview

The Nursing program is a Registered Nurse Diploma program. Our three-year program prepares students to become competent and accountable professional nurses.

Classes and clinical experiences are held Monday through Friday between 7 a.m. and 5 p.m. Evening clinical preparation may be required throughout the course of study.

Reading Hospital School of Health Sciences fosters the understanding of the importance of a lifelong commitment to continuing education, clinical skills, and professionalism. We strongly encourage our graduates to pursue advanced degrees which serve to support career mobility in the profession of nursing. Employers are requiring advanced degrees, and there is no time better than the present to start earning an advanced degree. We provide a seamless transition to Alvernia University's RN to BSN program after completing our three-year program. Alvernia University offers blended and online course formats which provide graduates with an opportunity to earn a Bachelor's of Science degree in Nursing (BSN) within one year after completing the dual enrollment program at RHSHS.



RN to BSN

This program offers a Dual Enrollment program in collaboration with Alvernia University. Dual Enrollment Admission students are simultaneously enrolled in the hospital-based Nursing program and Alvernia University's Associate of Science degree. Dual Enrollment is structured to provide a seamless career mobility pathway to sit for national licensure

examination. Qualified graduates will be eligible to receive the following credentials:

- a Diploma in Nursing from Reading Hospital School of Health Sciences, and
- an Associate of Science in Applied Health from Alvernia University

Credit Breakdown

- 50 nursing credits - dual enrollment level
- 39 general education credits - dual enrollment level
- 25 nursing credits - BSN level
- 9 general education credits - BSN level
- 123 credits - BSN

Accreditations and Approvals

Reading Hospital School of Health Sciences Nursing Program is accredited by the Accreditation Commission for Education in Nursing (ACEN), (3390 Peachtree Road NE, Suite 1400, Atlanta, GA, 30326; phone: 404-975-5000. The most recent accreditation decision made by the ACEN Board of Commissioners for the diploma nursing program is Continuing Accreditation. The Nursing Program is approved by the Pennsylvania State Board of Nursing (PO Box 2649, Harrisburg, PA, 17105; phone: 1-833-367-2762; fax: 717-783-0822; email: ST-NURSE@pa.gov; www.dos.pa.gov/ProfessionalLicensing/BoardsCommissions/Nursing.

Application and Admission

Successful applicants have above average grades in all required high school and/or college coursework including chemistry with a lab, two favorable references, and take the most recent version of the Test of Essential Academic Skills (ATI TEAS) exam. Applicants must document a minimum GPA of 2.5. The most recent college or high school GPA is used in the decision process. The application and materials deadline is April 1.

PHLEBOTOMY



The Phlebotomy program prepares individuals how to safely obtain venous and capillary blood specimens for the purpose of laboratory analysis.

Program Overview

The Phlebotomy Technician program is a formal, two-part structured program consisting of approximately 50 hours of classroom instruction and a minimum of 100 hours of clinical training. The program can be completed in as little as ten weeks and prepares students for employment as phlebotomists in hospitals, clinics, commercial laboratories, and medical offices. Students are provided instruction on how to obtain blood specimens from patients using proper collection techniques and standard precautions. Collection techniques include vacuum collection devices, syringes, butterfly needles, and dermal punctures. Specimen processing, point-of-care testing, and non-blood specimen collection is also covered in the curriculum.

After successful completion of the program, students receive a certificate of completion and are qualified to sit for the Board of Certification Phlebotomy Technician examination given by the American Society for Clinical Pathology (ASCP).

A Rewarding Career

In as little as ten weeks, you can earn a phlebotomy technician certificate and be working in the medical field as a phlebotomist. Phlebotomists are in high demand with a projected job growth of 25 percent through 2026.

Certification

Students successfully completing the program receive a certificate from Reading Hospital School of Health Sciences Phlebotomy Technician program and are eligible and prepared to sit for the certifying examination offered by the Board of Certification of the American Society for Clinical Pathology (ASCP). The ASCP Board of Certification (BOC) is the gold standard in global certification for medical laboratory professionals and has certified more than 525,000 individuals. They are the first and largest certification

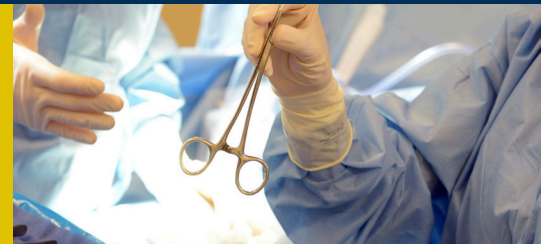
agency. Since their inception in 1928, the BOC continues to set a high standard for quality and continuing competency. To learn more, visit www.ascp.org.

Application and Admission

Phlebotomy Technician classes are held every spring beginning in April with classes taking place during the daytime. Deadlines for admission interviews is 10 weeks prior to the start of any Phlebotomy Technician course. Students must possess certain physical and mental attributes to be able to complete the curriculum. Please review the "Essential Functions" at <https://reading.towerhealth.org/app/files/public/4348/phlebotomist-essential-functions.pdf> prior to applying to the program. A student must meet these expectations with or without reasonable accommodations.

Applicants must be at least 18 years of age and have a high school diploma or GED to apply to the program. Applicants must submit one letter of reference and a resume. A face-to-face interview is required to be considered for admission.

SURGICAL TECHNOLOGY



The Surgical Technology program offers students exceptional classroom and clinical experiences in preparation for their technical role on surgical teams with focus on the human body, patient care, surgical specialties, and technology.

Program Overview

The Surgical Technology program offers a 20-month Dual Enrollment program in collaboration with Alvernia University. Dual enrolled students will be simultaneously enrolled in the hospital based Surgical Technology Program offered at Reading Hospital School of Health Sciences and Alvernia University's Associate of Science degree.

The program is designed to provide theoretical knowledge and hands-on application through rigorous clinical experiences. Classes and clinical experiences are held Monday through Friday between 7 a.m. and 4 p.m. The general education courses are taught by Alvernia University faculty. These courses provide students with a well-rounded background and also meet the requirements for the Associate of Science degree from Alvernia University.

This Surgical Technology program is one of only a few programs nationwide in which you will earn a certificate in robotic surgery. Our faculty-to-student ratio is 1:5 in the skills laboratory, and there are a significant number of hands-on hours which enable you to experience a large number and type of surgical procedures.



Dual Enrollment with Alvernia University

Dual Enrollment is structured to provide a seamless career mobility pathway while providing our graduates with the knowledge and skills to sit for national certification examination. Qualified graduates will be eligible to receive the following credentials:

- a Diploma in Surgical Technology from Reading Hospital School of Health Sciences, and
- an Associate of Science from Alvernia University

Credit Breakdown

- 44 surgical technology credits
- 30 general education credits
- 74 credits total

Career Mobility

Graduates looking to advance their professional skills and continue their education can pursue Alvernia University's Bachelor of Science in Healthcare Science or Healthcare Administration. Courses are offered in blended and online formats to allow our graduates to maintain employment while earning their advanced degree. Entry level salary is \$42,000, depending on location.

Accreditation

Reading Hospital School of Health Sciences Surgical Technology Program is accredited by the Commission on Accreditation of Allied Health Education Programs (www.caahep.org) upon the recommendation of the Accreditation Review Council on Education in Surgical Technology and Surgical Assisting (www.arcstsa.org).

CAAHEP is located at 9355 - 113th St. N, #7709, Seminole, FL 33775. Phone: 727-210-2350, Fax: 727-210-2354.

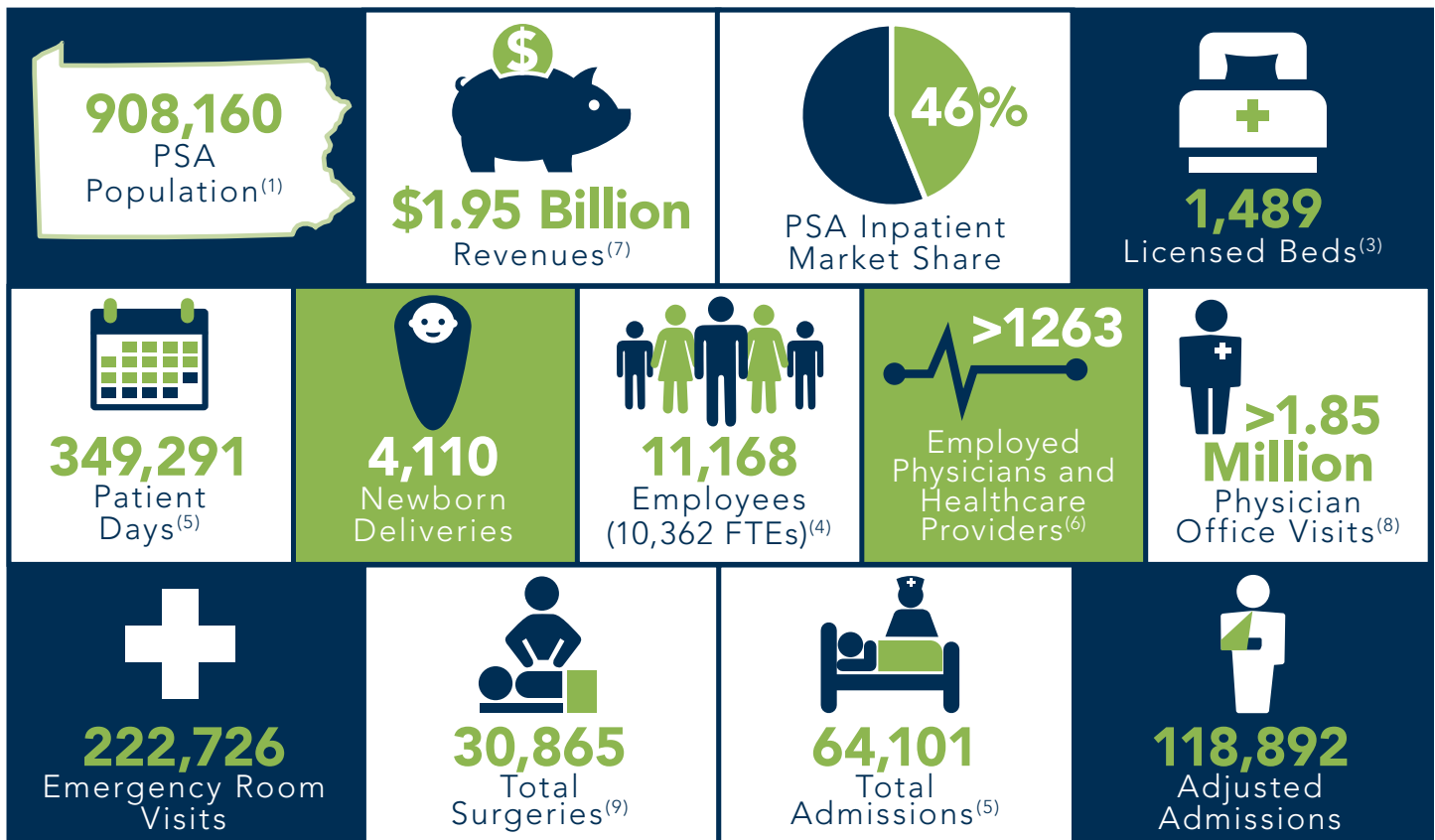
Application and Admission

Successful applicants have submitted high school and all secondary transcripts, two recommendations with confidence, and attend an interview. Applicants must document a minimum GPA of 2.5. The most recent college or high school GPA is used in the decision process. The application and materials deadline is June 1.

TOWER HEALTH OVERVIEW

Tower Health is a strong, regional, integrated healthcare provider/payer system that offers leading-edge, compassionate healthcare and wellness services to a population of 2.5 million people. Together, our four acute care hospitals and other entities provide a full range of medical care — from prevention, screenings and education; to the latest clinical services and surgeries available; to rehabilitation. We also offer wellness programs and public health services that ensure our communities are the healthiest they can be. Tower Health’s caring, highly trained physicians and staff are committed to patient safety and satisfaction.

With more than 11,000 team members, **Tower Health** consists of **Reading Hospital**, a teaching hospital in West Reading; **Phoenixville Hospital** in Phoenixville; **Pottstown Hospital** in Pottstown; and **St. Christopher’s Hospital for Children**, a partnership of **Tower Health** and Drexel University, in Philadelphia. It also includes Reading Hospital Rehabilitation at Wyomissing; Reading Hospital School of Health Sciences in West Reading; home healthcare services provided by Tower Health at Home; and a network of 27 urgent care facilities across the **Tower Health** service area. Tower Health Medical Group offers a connected network of more than 143 primary care and specialty care locations, that includes 761 physicians and 367 Advanced Practice Providers.



(1) 2021 Claritas estimate; Tower Health general acute care hospitals combined PSA.

(2) CY2020 inpatient market share based on Tower Health combined PSA; PHC4 data.

(3) Excludes nursery; Includes 61 beds at Reading Hospital Rehabilitation at Wyomissing; current as of Aug 2021.

(4) Current as of June 30, 2021; Includes THMG, DUP, THP, THUC, THAH, TowerDirect, and hospitals except St. Christopher’s.

(5) Excludes normal newborns.

(6) Includes 175 residents; 970 THMG, 26 DUP, and 92 THUC providers; current as of June 30, 2021.

(7) Includes all Tower entities except St. Christopher’s; excludes Transaction Costs and CARES \$.

(8) Tower Health Medical Group primary and specialty care visits (excludes St. Christopher’s).

(9) Includes 12,191 inpatient and 18,674 outpatient surgeries; excludes endoscopies.

** All data is FY2021 unless otherwise noted.

Reading Hospital School of Health Sciences

Office of Admissions

PO Box 16052

Reading, PA 19612

Phone: 484-628-0100

Fax: 484-628-0134

Email: rhshs@towerhealth.org

www.rhschoolofhealthsciences.org

Find us on  @TRHSHS and  @rshs.