

## Directions to Reading Hospital School of Health Sciences (RHSHS)

### From Allentown

Follow Route 222 South to Route 422 East. Exit at Penn Avenue/West Reading Business, heading west on Penn Avenue. Turn left at Fifth Avenue. Proceed to the fifth traffic light. RHSHS is on the left.

### From Harrisburg & Lebanon

Take the Pennsylvania Turnpike East to Exit 286 (Reading); then proceed on Route 222 North (Lancaster Pike) to Shillington. At the fifth traffic light, turn left on Museum Road. Proceed to the third traffic light. RHSHS is on the right.

### From Lancaster

Take Route 222 North (Lancaster Pike) to Shillington. At the third traffic light, turn left on Museum Road. Proceed to the third traffic light. RHSHS is on the right.

### From Philadelphia

Via the Pennsylvania Turnpike West, exit at Interchange 298 (Morgantown). Take I-176 to the juncture with Route 422 West. Take the Penn Avenue/West Reading exit to Penn Avenue. Turn left at Fifth Avenue. Proceed to the fifth traffic light. RHSHS is on the left.

### From Pottstown

Via Route 422, take the Penn Avenue/West Reading exit to Penn Avenue. Turn left at Fifth Avenue. Proceed to the fifth traffic light. RHSHS is on the left.

### From Pottsville

Via Route 61 South, exit at Route 222 South, and follow it until it merges with Route 422 East. Take the Penn Avenue/West Reading exit to Fifth Avenue, and turn left. Proceed to the fifth traffic light. RHSHS is on the left.

### From Route 22/1-78

Take Route 183 South. Exit at Route 222 South, and follow it until it merges with Route 422 East. Exit at Penn Avenue/West Reading. Turn left at Fifth Avenue. Proceed to the fifth traffic light. RHSHS is on the left.

**Reading Hospital School of Health Sciences**  
1025 Old Wyomissing Road  
Reading, PA 19611  
484-628-0100



[RHSchoolofHealthSciences.org](http://RHSchoolofHealthSciences.org)



# CAMPUS MAP

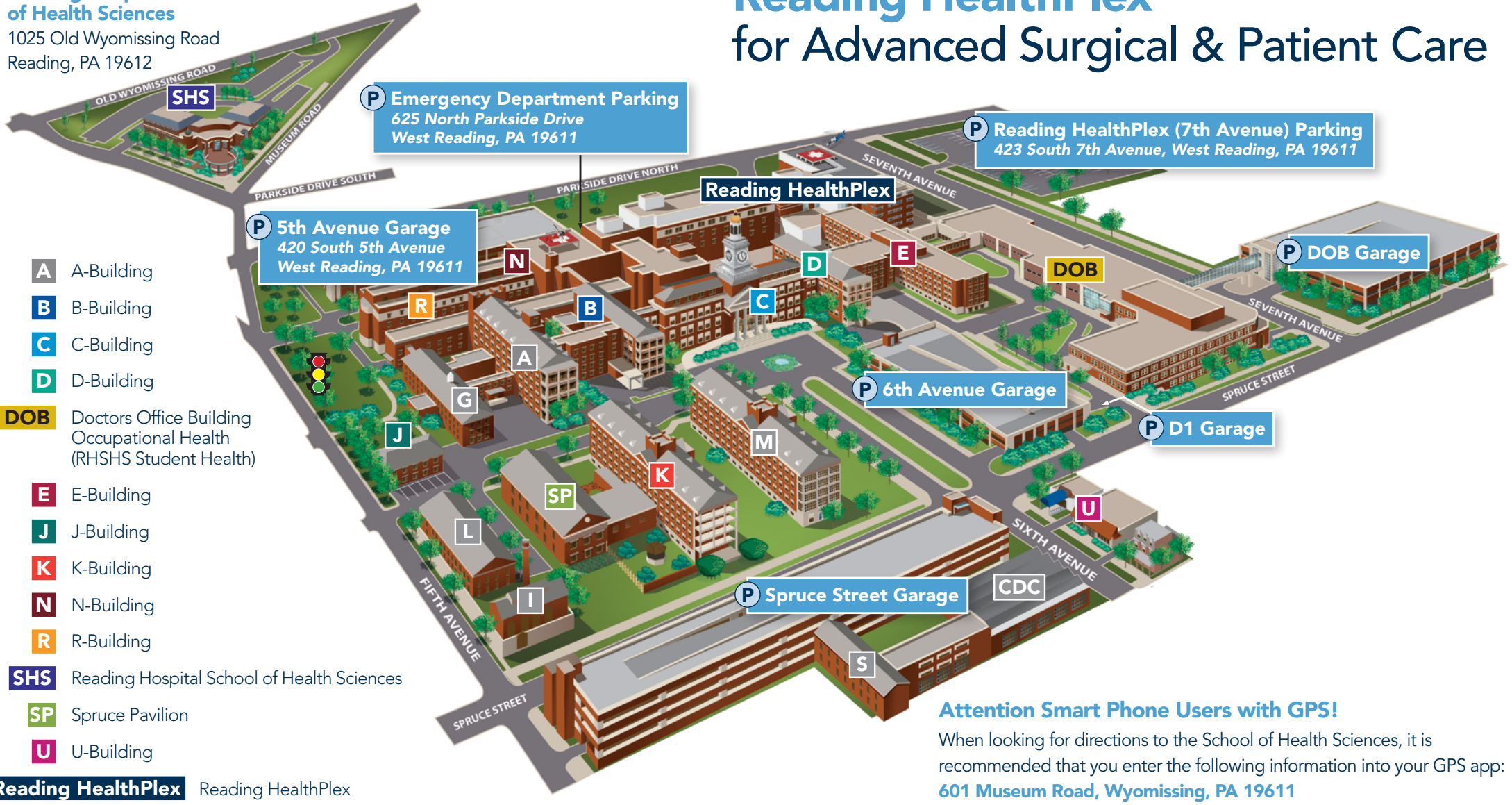
## FOR STUDENTS



**Reading Hospital School of Health Sciences**

1025 Old Wyomissing Road  
Reading, PA 19612

# Reading HealthPlex for Advanced Surgical & Patient Care



- A** A-Building
- B** B-Building
- C** C-Building
- D** D-Building
- DOB** Doctors Office Building  
Occupational Health  
(RHSHS Student Health)
- E** E-Building
- J** J-Building
- K** K-Building
- N** N-Building
- R** R-Building
- SHS** Reading Hospital School of Health Sciences
- SP** Spruce Pavilion
- U** U-Building

**Reading HealthPlex** Reading HealthPlex

**Attention Smart Phone Users with GPS!**

When looking for directions to the School of Health Sciences, it is recommended that you enter the following information into your GPS app:  
**601 Museum Road, Wyomissing, PA 19611**

**Other Buildings**

- CDC** Child Development Center
- G** G-Building  
Photo ID Badges
- I** I-Building
- L** L-Building
- M** M-Building
- S** S-Building

